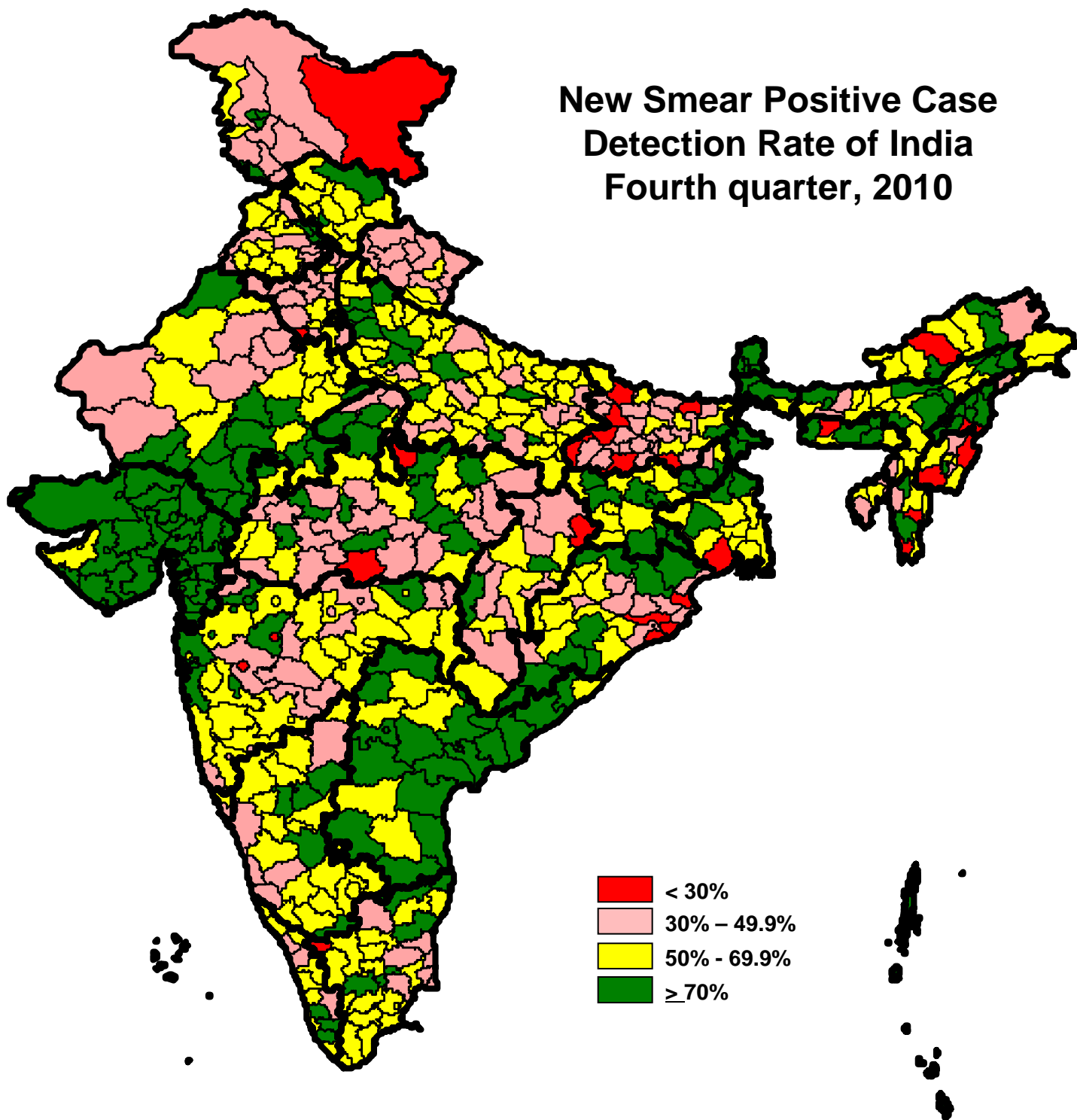


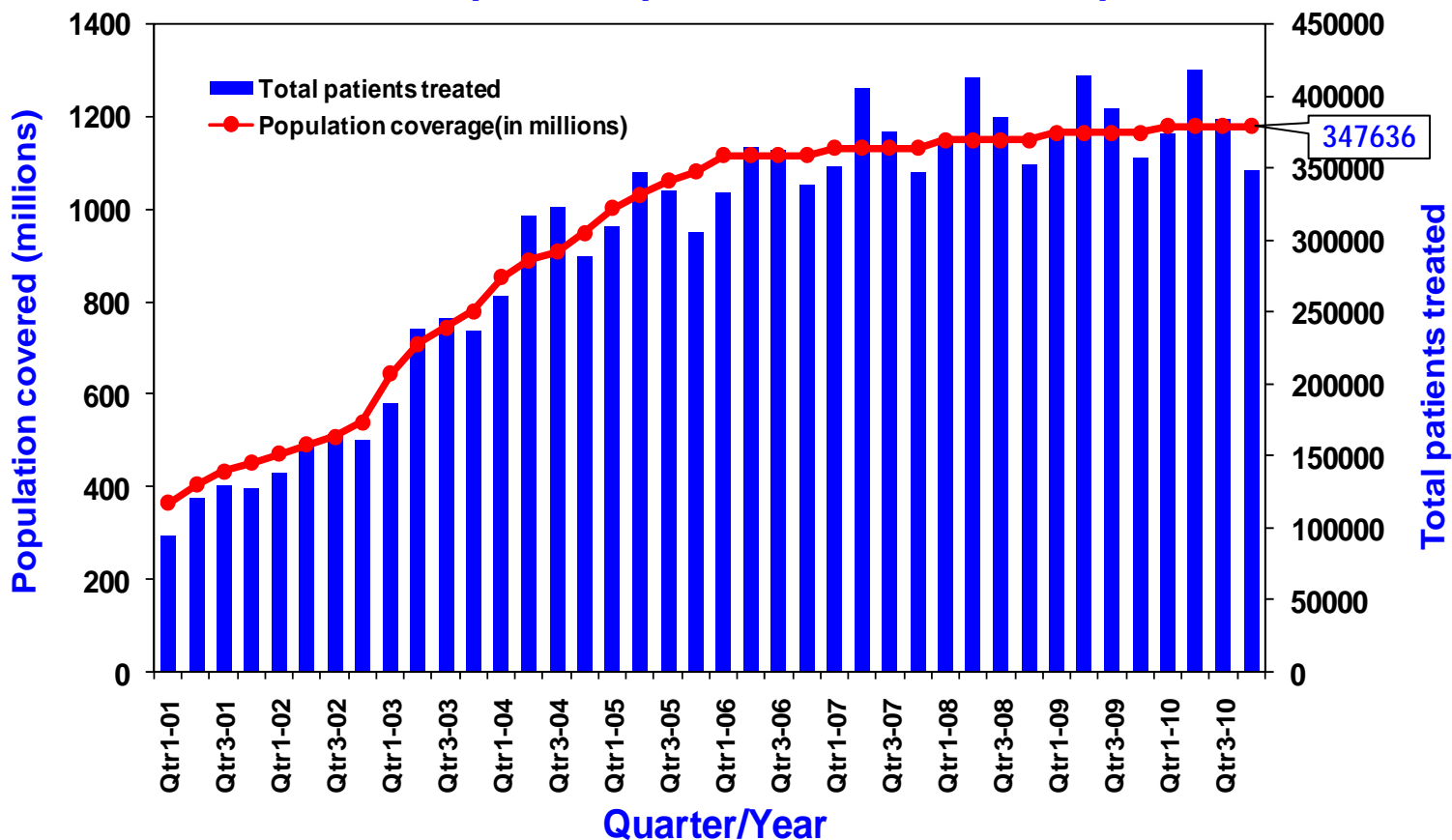
RNTCP Performance Report, India Fourth Quarter, 2010

New Smear Positive Case
Detection Rate of India
Fourth quarter, 2010

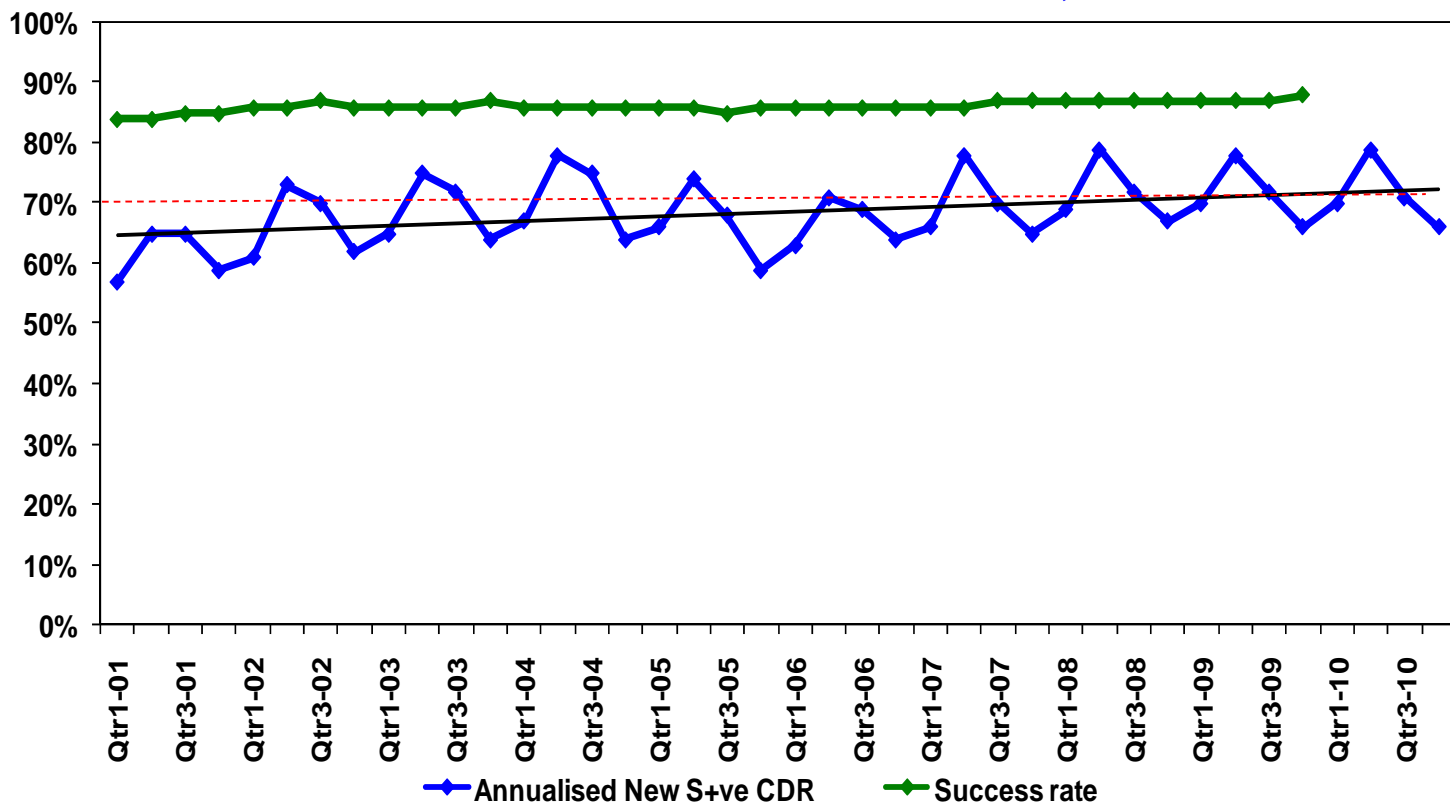


Central TB Division, Directorate General of Health Services
Ministry of Health and Family Welfare, Nirman Bhavan, New Delhi 110108
<http://www.tbcindia.org>

Population in India covered under DOTS and total tuberculosis patients put on treatment each quarter



Annualized new smear-positive case detection rate and treatment success rate in DOTS areas, 2000-2010*



*Estimated no. of NSP cases - 75/100,000 population per year (based on recent ARTI report)

Revised National Tuberculosis Control Programme, 4th quarter, 2010

Dear Colleagues,

It is my great pleasure to inform you that Revised National TB Control Programme (RNTCP) has maintained NSP Case notification (detection) rate of 49/lakh (65%) and treatment success rate of 88% in NSP patients at the national level in 4th quarter 2010 inspite of the fact that case notification rate drops during 4th quarter. The programme while consolidating and sustaining its past achievements is progressing well towards achieving the TB related Millennium Development Goals.

RNTCP Performance in 4th quarter 2010.

During the quarter, over 1.84 million TB suspects were examined, 201550 sputum positive cases were diagnosed and 347636 TB cases were registered for treatment. The annualized total case notification rate is 118 cases/100,000 population. The new sputum positive case notification rate is 49 per 100,000 population (65%). In addition to this 82355 new sputum negative cases, 50355 new extra pulmonary cases and 46516 sputum positive retreatment cases were also registered for treatment during the quarter. Treatment success rate among the new sputum positive pulmonary TB cases, registered in 4th quarter 2009, is 88% and the sputum conversion rate of patients registered during 3rd quarter, 2010 is 90%. The default rate among NSP (5.3%), NSN (6.7%), new extra pulmonary (3.6%) and retreatment sputum positive patients (14.1%) shows a declining trend over the past several quarters.

Major Activities during the quarter

Progress in accreditation of Intermediate Reference Laboratories (IRL).

The programme is in the process of establishing a network of about 43 accredited Culture and Drug Susceptibility testing (DST) Laboratories across the country in a phased manner for diagnosis and follow up of MDR-TB patients. The State Culture & DST laboratories at Gujarat, Maharashtra, Andhra Pradesh, Delhi, Kerala, Tamil Nadu, Rajasthan, West Bengal, Orissa and Jharkhand have been accredited. The State C&DST Labs of Haryana, Puducherry, Uttarakhand, IRL Lucknow (CSMMU) are in advanced stage of accreditation. The other sector laboratories which are at the verge of accreditation are JJ Hospital Mumbai, DFIT Nellore and PGI Chandigarh. The newer rapid diagnostic are available in IRL Andhra Pradesh, IRL Gujarat, IRL Nagpur (Maharashtra) and SMS Jaipur.

Progress in the DOTS-Plus services for MDR TB Cases

DOT Plus services for management of MDR-TB as now available in 141 districts covering a population of ~288 million in 12 states. Till date a total of around 3605 MDR TB patients are on treatment in these states.

In 4th quarter 2011, central level DOTS Plus appraisals were conducted in Himachal Pradesh (2 districts).

Jharkhand (2 districts), Maharashtra (5 districts) and Madhya Pradesh (2 districts). Jharkhand state rolled out services in its 1st phase districts. Other states are in various stages of preparatory activities for rolling out DOTS Plus Services. The 4th National DOTS Plus Training Center was strategically initiated at STDC, Trivandrum, Kerala where the 1st national training batch was organized under mentorship of CTD and STDC Ahmedabad in December 2010.

In a series of state wise meeting in November 2010 for planning DOTS Plus Scale up in each state, the state scale up plans and timelines for rolling out DOTS Plus services in various districts of each state was aligned with the national plans and resources in terms of the laboratory capacity and drug envelopes earmarked for each state over the next 2 years that has been accepted by CTD and consolidated to form the national DOTS Plus scale-up plan for 2011-12.

Progress in TB HIV Collaborative Activities

Intensified Package of HIV –TB collaborative activities have been rolled out in 29 states (6 high prevalence states and Goa, Mizoram, Puducherry in 2008, Delhi, Gujarat, Assam, Kerala, Punjab, Rajasthan, West Bengal, Orissa and Chandigarh in 2009 and 11 states in 2010) I would like to congratulate the states which are performing well - Karnataka, Tamil Nadu, Chandigarh, Gujarat and Goa where more than 80% of the registered TB patients in 4q10 know their HIV status and urge other states which are moderately performing (Maharashtra Andhra Pradesh, Mizoram, Puducherry and Delhi) and poor performing (Haryana, Assam, Kerala, Manipur and Nagaland) to accelerate progress in this regard . The proportion of HIV-positive TB patients put on CPT has improved to 93%, but linkage to ART though improved (53%) but still remains the biggest challenge

Progress in Procurement and Drug Logistics Management

Training on Drug Logistics Management for State Officials, SDS/District Pharmacists & RNTCP Medical Consultants of Nagpur and Pune regions (Maharashtra) was conducted by Strategic Alliance Management Services (SAMS), CTD on 6th and 8th October, 2010 respectively. To oversee the Drug Logistics Management system, field visits to SDS, DTC/TU/PHI of Nagpur and Pune was also conducted by SAMS team during this period. Similar training for Tamil Nadu, Puducherry and Andaman & Nicobar Islands was conducted in November, 2010 at Chennai.

To oversee the Drug Logistics Management system in the state, SDS Patna & DTC/TU/PHIs of Patna, Gaya and Jahanabad were visited by SAMS team during 21st – 23rd December, 2010.

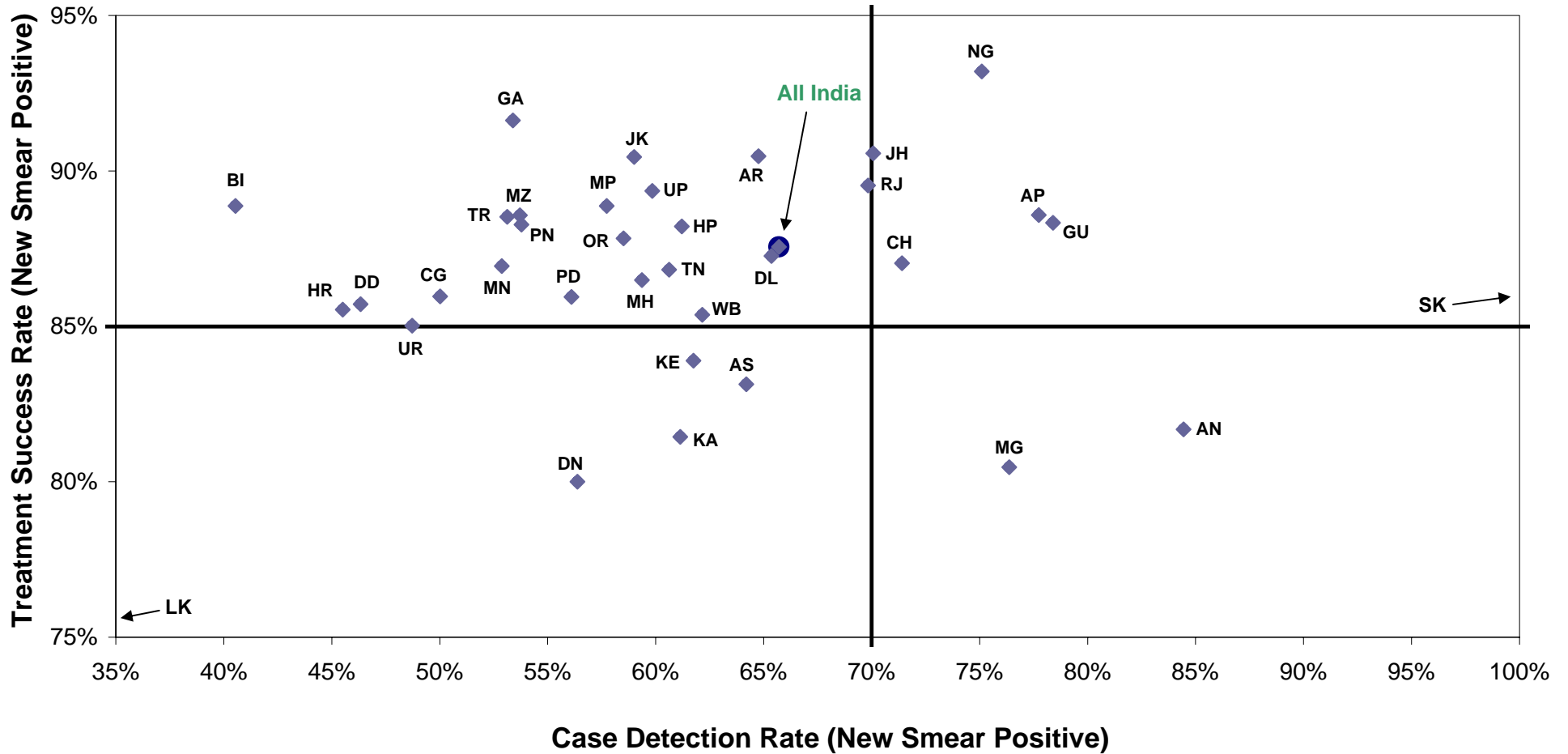
State Drug Store, Bhopal (Madhya Pradesh) was visited by CMO (TB) on 21st October, 2010.

Progress in ACSM activities

Regional ACSM training workshops were held in Guwahati (8 - 10th Nov'10) and Bhopal (25 - 27th Nov'10) to train the STOs, DTOs, State IEC Officers and Communication Facilitators of all the 8 North-Eastern states and Chhattisgarh, Madhya Pradesh and Uttar Pradesh.

Dr. Ashok Kumar
Deputy Director General (TB)
Dte. General of Health Services, MOHFW,
Government of India

Case Detection Rate and Treatment Success Rate in RNTCP areas for 4th quarter 2010/2009



AP- Andhra Pradesh; AR- Arunachal Pradesh; AN- Andaman & Nicobar; AS- Assam; BI- Bihar; CH- Chandigarh; CG- Chhatisgarh; DD- Daman & Diu; DL- Delhi; DN- Dadra & Nagar Haveli; GA- Goa; GU- Gujarat; HR- Haryana; HP- Himachal Pradesh; JK- Jammu & Kashmir; JH- Jharkhand; KA- Karnataka; KE- Kerala; LK- Lakshadweep; MP- Madhya Pradesh; MH- Maharashtra; MN- Manipur; MG- Meghalaya; MZ- Mizoram, NG- Nagaland; OR- Orissa, PD- Puducherry; PN- Punjab; RJ- Rajasthan; SK- Sikkim; TN- Tamil Nadu; TR- Tripura; UP- Uttar Pradesh; UR- Uttarakhand; WB- West Bengal

Performance of RNTCP Case Detection (2010, Fourth quarter), Smear Conversion (2010, Third quarter), and Treatment Outcomes (2009, Fourth quarter)

State	Population (in lakh) covered by RNTCP ¹	No. of suspects examined	Suspects examined per lakh population	Rate of change in suspects examined per lakh population (compared to same quarter in previous year)	No of Smear positive patients diagnosed ²	Suspects examined per smear positive case diagnosed	Rate of change in suspects examined per s+ case diagnosed (compared to same quarter in previous year)	Annualized smear positive case notification rate (reported by RNTCP DMCs)	Annualized smear positive case notification rate [from CFR: sm + cases (NSP + Rel + TAD) * 4 / Pop]	Total patients registered for treatment ³	Annualized total case notification rate	Annualized new smear positive case notification rate	Annualized new smear negative case notification rate	Annualized new extra pulmonary case notification rate	Annualized previously treated case notification rate
Andaman & Nicobar	5	941	196	-17%	107	9	-12%	89	91	238	198	63	52	49	34
Andhra Pradesh	840	142397	170	2%	18347	8	-3%	87	75	28094	134	58	34	15	27
Arunachal Pradesh	12	2465	201	-6%	230	11	7%	75	65	472	154	49	38	30	37
Assam	302	33087	110	-6%	4884	7	-3%	65	59	8855	117	48	32	16	22
Bihar	964	88190	91	-8%	9936	9	11%	41	37	17475	73	30	22	5	15
Chandigarh	14	3526	258	-19%	473	7	-17%	138	88	565	165	68	15	49	34
Chhattisgarh	239	25673	107	-2%	2942	9	-3%	49	46	6344	106	40	40	14	13
D & N Haveli	3	526	156	2%	71	7	6%	84	61	100	119	45	25	21	27
Daman & Diu	3	768	297	14%	59	13	-19%	91	48	75	116	37	40	14	25
Delhi	179	36764	205	-13%	4875	8	-6%	109	92	9741	217	62	36	64	54
Goa	17	4004	234	17%	321	12	13%	75	55	536	125	43	28	30	24
Gujarat	582	112176	193	6%	14167	8	-1%	97	88	18592	128	63	13	15	37
Haryana	250	37286	149	-13%	4731	8	-1%	76	66	7602	122	43	23	21	35
Himachal Pradesh	67	14847	221	-1%	1565	9	5%	93	83	2825	168	58	29	39	42
Jammu & Kashmir	116	20866	180	19%	2063	10	1%	71	69	3050	105	56	13	19	17
Jharkhand	310	34972	113	3%	4955	7	1%	64	61	8729	112	53	33	7	19
Karnataka	588	128069	218	11%	10691	12	20%	73	60	17090	116	46	25	22	23
Kerala	343	91104	265	8%	3562	26	11%	42	36	6669	78	31	19	18	9
Lakshadweep	1	121	161	81%	1	121		5	5	2	11	5	5	0	0
Madhya Pradesh	710	87569	123	9%	12068	7	4%	68	60	20997	118	46	36	13	23
Maharashtra	1111	185123	167	7%	18830	10	9%	68	60	33845	122	47	27	21	27
Manipur	24	3414	141	10%	321	11	6%	53	49	798	132	40	40	28	24
Meghalaya	26	4571	176	-7%	574	8	0%	89	74	1075	166	57	32	40	37
Mizoram	10	2004	202	11%	138	15	61%	56	52	503	203	40	54	66	43
Nagaland	22	3280	148	-3%	449	7	-19%	81	74	915	165	56	40	34	34
Orissa	404	49143	122	-10%	6517	8	-6%	65	59	11414	113	50	27	20	16
Puducherry	13	4747	357	-15%	562	8	6%	169	56	363	109	42	24	26	17
Punjab	274	40152	147	-7%	5251	8	-4%	77	70	8453	124	51	21	24	27
Rajasthan	668	96679	145	7%	15351	6	5%	92	79	24431	146	56	39	19	32
Sikkim	6	1479	244	-5%	168	9	-12%	111	100	349	231	75	53	52	51
Tamil Nadu	670	161123	240	-8%	10625	15	-5%	63	57	19663	117	45	33	22	17
Tripura	36	4711	132	-3%	468	10	-8%	52	48	664	74	40	12	12	11
Uttar Pradesh	1973	269510	137	-8%	39259	7	-2%	80	73	61051	124	57	30	13	23
Uttarakhand	98	16351	167	1%	2224	7	-8%	91	68	3136	128	46	29	20	32
West Bengal	887	134399	152	-9%	13765	10	-2%	62	58	22925	103	47	20	17	20
Grand Total	11767	1842037	157	-1%	210550	9	-3%	72	64	347636	118	49	28	17	24

Estimated New Smear Positive cases / lakh population based on ARTI data for North Zone (Chandigarh, Delhi, Haryana, Himachal Pradesh, Jammu & Kashmir, Punjab, Uttar Pradesh, Uttarakhand) is 95; East Zone (Andaman & Nicobar, Arunachal Pradesh, Assam, Bihar, Jharkhand, Manipur, Meghalaya, Mizoram, Nagaland, Sikkim, Tripura, West Bengal) is 75; South Zone (Andhra Pradesh, Karnataka, Lakshadweep, Puducherry, Tamil Nadu) is 75 and West Zone (Chhattisgarh, Dadra & Nagar Haveli, Daman & Diu, Goa, Gujarat, Madhya Pradesh, Maharashtra, Rajasthan) is 80; Orissa is 85, Kerala is 50

1 Projected population based on census population of 2001 is used for calculation of case-detection rate. 1 lakh = 100,000 population

2 Smear positive patients diagnosed include new smear positive cases and smear positive retreatment cases, data from DMCs

3 Total patients registered for treatment includes new sputum smear positive cases, new smear negative cases, new extra-pulmonary cases, new others, relapse, failure, TAD and retreatment others

Performance of RNTCP Case Detection (2010, Fourth quarter), Smear Conversion (2010, Third quarter), and Treatment Outcomes (2009, Fourth quarter)

State	Annualized previously treated smear positive case notification rate	No (%) of pediatric cases out of all New cases		3 month conversion rate of new smear positive patients	3 month conversion rate of retreatment patients	No (%) of all Smear Positive cases started RNTCP DOTS within 7 days of diagnosis		No (%) of all Smear Positive cases registered within one month of starting RNTCP DOTS treatment		No (%) of all cured Smear Positive cases having end of treatment follow-up sputum done within 7 days of last dose		No (%) of cases (all forms of TB) registered receiving DOT through a community volunteer		Proportion of all registered TB cases with known status	Proportion of TB patients known to be HIV infected among tested	Proportion of TB patients known to be HIV infected among registered	Proportion of HIV infected TB patients put on CPT (RT report)	Proportion of HIV infected TB patients put on ART (RT report)
		No	%			No	%	No	%	No	%	No	%					
Andaman & Nicobar	29	20	10%	93%	88%	110	99%	96	86%	67	87%	35	15%	0%		0%		
Andhra Pradesh	19	1132	5%	92%	75%	14615	90%	15850	98%	11047	84%	22871	81%	76%	12%	9%	93%	38%
Arunachal Pradesh	21	46	13%	93%	74%	195	91%	209	98%	175	90%	149	32%	14%	0%	0%		
Assam	12	290	4%	86%	68%	3866	85%	4221	93%	2678	76%	3077	35%	23%	1%	0%	75%	100%
Bihar	8	995	7%	88%	71%	7993	87%	8837	96%	6471	79%	9752	56%	6%	3%	0%	25%	75%
Chandigarh	24	46	10%	92%	70%	278	89%	310	99%	125	57%	193	34%	84%	1%	1%		
Chhattisgarh	7	280	5%	89%	75%	2495	89%	2716	97%	1753	79%	3114	49%	4%	2%	0%	0%	100%
D & N Haveli	18	7	9%	92%	69%	49	92%	50	94%	30	94%	17	17%	21%	0%	0%		
Daman & Diu	12	7	12%	100%	67%	25	78%	32	100%	23	100%	9	12%	75%	7%	5%	0%	100%
Delhi	33	946	13%	89%	71%	3787	88%	4268	100%	3452	98%	898	9%	63%	2%	1%	61%	67%
Goa	14	42	10%	91%	73%	206	85%	239	99%	198	94%	109	20%	97%	7%	7%	100%	66%
Gujarat	26	833	6%	92%	70%	11917	92%	12728	98%	9007	91%	10170	55%	81%	4%	4%	93%	71%
Haryana	26	322	6%	90%	74%	3741	87%	3996	93%	3160	87%	2110	28%	56%	1%	1%	0%	0%
Himachal Pradesh	30	128	6%	93%	82%	1423	96%	1438	97%	1089	92%	382	14%	16%	1%	0%	0%	100%
Jammu & Kashmir	14	118	5%	92%	79%	1803	89%	1809	89%	1422	91%	280	9%	2%	5%	0%	0%	0%
Jharkhand	9	344	5%	92%	78%	3940	82%	4622	97%	2862	71%	5030	58%	10%	6%	1%	50%	33%
Karnataka	15	999	7%	88%	63%	7601	84%	8630	96%	5145	80%	7770	45%	82%	15%	13%	97%	61%
Kerala	7	980	17%	84%	67%	2820	87%	2966	92%	2199	81%	4226	63%	37%	5%	2%	71%	86%
Lakshadweep	0	0	0%	75%	0%	1	100%	1	100%	0	0%	0	0%	0%		0%		
Madhya Pradesh	15	1480	9%	91%	71%	9437	87%	10253	94%	5754	76%	12214	58%	10%	2%	0%	0%	75%
Maharashtra	14	1730	7%	90%	69%	14793	87%	16362	96%	10934	82%	9567	28%	75%	11%	8%	94%	55%
Manipur	11	34	5%	91%	80%	296	97%	290	95%	213	82%	455	57%	39%	18%	7%	48%	65%
Meghalaya	23	89	11%	83%	58%	458	88%	478	92%	328	83%	691	64%	9%	0%	0%		
Mizoram	16	49	12%	83%	71%	138	99%	135	97%	142	90%	85	17%	64%	15%	10%	83%	59%
Nagaland	21	134	18%	92%	83%	325	76%	347	81%	231	66%	305	33%	46%	7%	3%	89%	95%
Orissa	10	549	6%	88%	66%	4972	82%	5832	96%	3628	74%	7692	67%	4%	3%	0%	0%	14%
Puducherry	15	39	13%	89%	79%	136	72%	156	82%	176	95%	0	0%	69%	3%	2%	100%	67%
Punjab	21	415	6%	91%	76%	4638	94%	4927	100%	3343	86%	2004	24%	56%	1%	1%	10%	65%
Rajasthan	25	1038	5%	92%	77%	11610	86%	13210	97%	8845	84%	3558	15%	5%	1%	0%	33%	67%
Sikkim	35	38	13%	83%	61%	157	94%	167	100%	110	96%	120	34%	0%	0%	0%		
Tamil Nadu	13	1473	9%	91%	69%	8068	82%	9525	97%	6675	81%	5440	28%	85%	8%	7%	84%	62%
Tripura	9	17	3%	88%	74%	341	79%	419	97%	286	78%	340	51%	10%	0%	0%	50%	100%
Uttar Pradesh	17	3003	6%	91%	78%	32668	90%	35933	99%	25210	87%	43088	71%	7%	2%	0%	19%	25%
Uttarakhand	23	228	10%	89%	73%	1443	85%	1659	97%	1044	81%	1734	55%	25%	1%	0%	43%	14%
West Bengal	13	894	5%	89%	66%	10602	80%	12400	93%	9146	82%	6080	27%	34%	3%	1%	41%	41%
Grand Total	16	18745	7%	90%	73%	166947	87%	185111	97%	126968	83%	163565	47%	39%	8%	3%	91%	53%

Estimated New Smear Positive cases / lakh population based on ARTI data for North Zone (Chandigarh, Delhi, Haryana, Himachal Pradesh, Jammu & Kashmir, Punjab, Uttar Pradesh, Uttarakhand) is 95; East Zone (Andaman & Nicobar, Arunachal Pradesh, Assam, Bihar, Jharkhand, Manipur, Meghalaya, Mizoram, Nagaland, Sikkim, Tripura, West Bengal) is 75; South Zone (Andhra Pradesh, Karnataka, Lakshadweep, Puducherry, Tamil Nadu) is 75 and West Zone (Chhattisgarh, Dadra & Nagar Haveli, Daman & Diu, Goa, Gujarat, Madhya Pradesh, Maharashtra, Rajasthan) is 80; Orissa is 85, Kerala is 50

1 Projected population based on census population of 2001 is used for calculation of case-detection rate. 1 lakh = 100,000 population

2 Smear positive patients diagnosed include new smear positive cases and smear positive retreatment cases, data from DMCs

3 Total patients registered for treatment includes new sputum smear positive cases, new smear negative cases, new extra-pulmonary cases, new others, relapse, failure, TAD and retreatment others

Treatment Outcome of New cases for 4th quarter 2009

Implementing states	New Smear Positive ¹							New Smear Negative ²						New Extra Pulmonary ²					
	Registered	Cure	Completed	Died	Failure	Defaulted	Trans out	Registered	Completed	Died	Failure	Defaulted	Trans out	Registered	Completed	Died	Failure	Defaulted	Trans out
Andaman & Nicobar	71	81.7%	0.0%	1.4%	4.2%	11.3%	1.4%	50	90.0%	2.0%	0.0%	8.0%	0.0%	47	83.0%	6.4%	2.1%	6.4%	2.1%
Andhra Pradesh	11993	86.5%	2.0%	4.9%	2.6%	3.7%	0.3%	7220	89.8%	4.1%	0.5%	4.9%	0.7%	2985	91.8%	2.9%	0.1%	3.6%	1.7%
Arunachal Pradesh	168	89.9%	0.6%	0.6%	1.8%	6.0%	1.2%	158	89.9%	0.0%	0.0%	10.1%	0.0%	86	95.3%	2.3%	0.0%	2.3%	0.0%
Assam	3848	79.2%	3.9%	4.9%	2.1%	9.2%	0.6%	2559	82.5%	3.7%	0.7%	12.5%	0.5%	1165	90.4%	2.3%	0.1%	6.7%	0.5%
Bihar	8764	80.5%	8.4%	3.1%	1.1%	6.3%	0.6%	6758	90.2%	1.5%	0.3%	7.3%	0.7%	1312	90.1%	2.3%	0.1%	3.2%	4.3%
Chandigarh	185	87.0%	0.0%	2.2%	3.2%	3.8%	3.8%	90	92.2%	0.0%	0.0%	4.4%	3.3%	139	97.1%	0.0%	0.7%	0.7%	1.4%
Chhattisgarh	2493	79.2%	6.7%	4.2%	0.8%	8.0%	1.0%	2563	86.2%	3.5%	0.1%	9.7%	0.5%	889	92.5%	1.6%	0.0%	4.8%	1.1%
D & N Haveli	35	80.0%	0.0%	2.9%	0.0%	11.4%	5.7%	29	86.2%	0.0%	0.0%	10.3%	3.4%	17	100.0%	0.0%	0.0%	0.0%	0.0%
Daman & Diu	21	85.7%	0.0%	4.8%	0.0%	4.8%	4.8%	14	71.4%	0.0%	7.1%	21.4%	0.0%	10	90.0%	0.0%	0.0%	10.0%	0.0%
Delhi	2787	87.1%	0.2%	3.2%	4.4%	3.6%	1.5%	1933	91.7%	2.3%	1.2%	3.5%	1.3%	3000	95.6%	1.2%	0.2%	2.2%	0.8%
Goa	179	91.1%	0.6%	0.6%	3.9%	3.9%	0.0%	77	90.9%	5.2%	1.3%	2.6%	0.0%	137	95.6%	2.9%	0.7%	0.7%	0.0%
Gujarat	8425	88.1%	0.2%	4.2%	2.4%	4.2%	0.8%	2454	89.3%	4.6%	0.6%	5.1%	0.4%	2553	93.1%	2.9%	0.2%	3.1%	0.7%
Haryana	2925	84.6%	1.0%	4.8%	2.7%	6.5%	0.4%	1812	86.0%	3.8%	1.0%	9.1%	0.2%	1330	94.3%	1.4%	0.2%	4.1%	0.1%
Himachal Pradesh	950	86.6%	1.6%	4.3%	2.7%	4.1%	0.6%	516	88.8%	3.3%	1.2%	6.2%	0.6%	586	93.9%	3.2%	0.0%	2.7%	0.2%
Jammu & Kashmir	1424	88.9%	1.5%	4.0%	1.3%	2.0%	2.2%	448	89.3%	3.3%	0.7%	4.7%	2.0%	540	91.5%	2.2%	0.2%	3.5%	2.6%
Jharkhand	4061	86.5%	4.1%	3.3%	1.2%	4.5%	0.4%	3138	91.5%	2.2%	0.5%	5.5%	0.4%	667	94.2%	1.2%	0.0%	3.4%	1.2%
Karnataka	6520	80.1%	1.4%	7.4%	3.0%	7.2%	0.9%	3630	83.3%	6.9%	0.7%	7.9%	1.2%	3245	89.3%	4.1%	0.2%	4.7%	1.7%
Kerala	2801	82.2%	1.7%	5.1%	5.0%	5.2%	0.9%	1631	92.0%	2.8%	0.7%	3.6%	0.9%	1639	91.8%	2.7%	0.2%	3.8%	1.5%
Lakshadweep	0							1	100.0%	0.0%	0.0%	0.0%	0.0%	2	100.0%	0.0%	0.0%	0.0%	0.0%
Madhya Pradesh	7146	85.8%	3.1%	4.1%	1.4%	4.7%	1.0%	6563	88.5%	2.2%	0.4%	7.7%	1.2%	2284	90.3%	1.7%	0.0%	4.3%	3.6%
Maharashtra	13012	85.3%	1.1%	5.5%	1.9%	4.9%	1.1%	8027	88.5%	3.7%	0.6%	6.1%	1.0%	6125	90.9%	3.1%	0.1%	4.6%	1.2%
Manipur	245	86.5%	0.4%	4.5%	3.3%	4.1%	1.2%	286	90.6%	2.1%	0.0%	7.3%	0.0%	153	94.1%	1.3%	0.0%	4.6%	0.0%
Meghalaya	425	78.8%	1.6%	2.4%	6.1%	8.5%	2.6%	218	76.1%	13.3%	0.9%	8.3%	1.4%	255	78.8%	13.3%	0.4%	6.7%	0.8%
Mizoram	140	86.4%	2.1%	2.9%	5.0%	3.6%	0.0%	165	90.9%	4.2%	0.6%	4.2%	0.0%	167	95.8%	3.0%	0.0%	1.2%	0.0%
Nagaland	294	92.9%	0.3%	1.4%	2.4%	3.1%	0.0%	204	90.2%	2.0%	0.5%	6.9%	0.5%	153	98.0%	0.7%	0.0%	0.7%	0.7%
Orissa	5244	83.3%	4.6%	4.8%	1.3%	5.3%	0.8%	2955	86.9%	4.5%	0.4%	7.1%	1.1%	2135	91.4%	3.6%	0.1%	4.3%	0.6%
Puducherry	185	84.9%	1.1%	4.3%	3.8%	5.9%	0.0%	63	96.8%	3.2%	0.0%	0.0%	0.0%	74	90.5%	6.8%	0.0%	2.7%	0.0%
Punjab	3487	86.3%	1.9%	4.6%	2.2%	3.7%	1.3%	1523	88.6%	3.3%	1.2%	4.8%	2.0%	1596	93.9%	2.5%	0.1%	1.9%	1.6%
Rajasthan	8498	87.8%	1.8%	3.6%	2.2%	4.4%	0.2%	7068	89.8%	3.4%	0.9%	5.9%	0.1%	3188	93.6%	3.1%	0.1%	3.0%	0.2%
Sikkim	99	85.9%	0.0%	3.0%	11.1%	0.0%	0.0%	74	87.8%	5.4%	6.8%	0.0%	0.0%	91	94.5%	2.2%	0.0%	3.3%	0.0%
Tamil Nadu	8007	86.0%	0.8%	5.4%	1.5%	5.9%	0.3%	5312	92.4%	3.3%	0.2%	3.9%	0.2%	4024	95.2%	2.6%	0.0%	1.8%	0.4%
Tripura	366	86.9%	1.6%	6.6%	1.9%	2.5%	0.5%	114	91.2%	4.4%	0.0%	4.4%	0.0%	99	94.9%	3.0%	0.0%	1.0%	1.0%
Uttar Pradesh	26773	86.3%	3.1%	3.7%	0.9%	5.5%	0.6%	18471	90.0%	2.0%	0.3%	7.1%	0.6%	7168	94.8%	1.0%	0.1%	3.5%	0.7%
Uttarakhand	1135	82.7%	2.3%	4.3%	2.0%	7.1%	1.5%	748	85.7%	3.1%	0.9%	8.8%	1.5%	442	95.0%	1.1%	0.0%	3.2%	0.7%
West Bengal	11146	84.0%	1.4%	4.3%	3.0%	6.6%	0.8%	4777	84.5%	5.4%	0.9%	7.8%	1.4%	3858	89.2%	3.7%	0.2%	4.2%	2.6%
Grand Total	143852	85.1%	2.5%	4.4%	2.0%	5.3%	0.7%	91649	88.8%	3.2%	0.5%	6.7%	0.7%	52161	92.5%	2.6%	0.1%	3.6%	1.2%

1 Treatment success for New Smear Positive is cured and treatment completed.

2 Treatment success for New Smear Negative and New Extra Pulmonary are treatment completed.

**Outcome of Smear Positive Retreatment cases for India
Fourth quarter 2009 (excluding "Others")**

Type of retreatment case	Cured	Success	Died	Failure	Defaulted	Transferred out	No. registered
Relapse	68.9%	75.4%	7.0%	4.9%	11.6%	1.2%	25443
Failure	51.0%	58.1%	9.2%	16.5%	14.8%	1.3%	4786
Treatment after default	59.7%	67.6%	8.1%	4.0%	17.7%	2.5%	16835
Total	63.8%	70.8%	7.6%	5.8%	14.1%	1.6%	47064

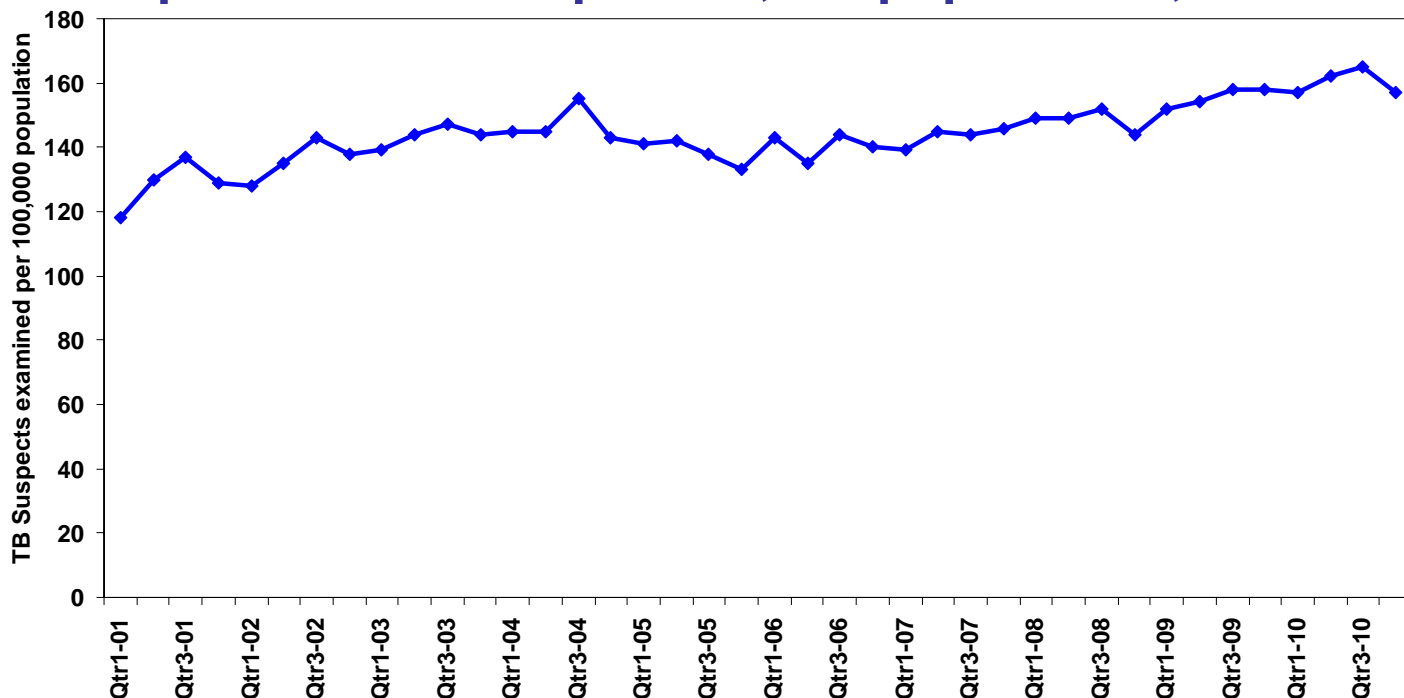
State-wise outcome of Smear Positive Retreatment cases Fourth quarter 2009 (excluding "Others")

Implementing states	Relapse							Failure							TAD						
	No. registered	Cured	Success	Died	Failure	Defaulted	Transferred out	No. registered	Cured	Success	Died	Failure	Defaulted	Transferred out	No. registered	Cured	Success	Died	Failure	Defaulted	Transferred out
Andaman & Nicobar	19	73.7%	78.9%	10.5%	0.0%	5.3%	5.3%	0							8	62.5%	0.0%	12.5%	0.0%	25.0%	0.0%
Andhra Pradesh	2022	70.9%	76.8%	8.4%	5.9%	8.4%	0.5%	526	51.7%	6.8%	10.5%	16.7%	13.1%	1.1%	1504	66.4%	7.1%	8.4%	4.6%	12.2%	1.3%
Arunachal Pradesh	39	74.4%	74.4%	5.1%	12.8%	7.7%	0.0%	7	42.9%	14.3%	0.0%	14.3%	28.6%	0.0%	18	61.1%	22.2%	0.0%	5.6%	11.1%	0.0%
Assam	504	55.0%	67.5%	9.1%	4.8%	17.7%	1.0%	109	34.9%	17.4%	11.0%	17.4%	19.3%	0.0%	320	44.1%	10.9%	7.8%	5.6%	30.3%	1.3%
Bihar	730	68.1%	81.8%	4.4%	3.2%	9.3%	1.4%	123	42.3%	21.1%	9.8%	10.6%	14.6%	1.6%	954	64.2%	15.2%	5.8%	2.7%	11.4%	0.7%
Chandigarh	54	79.6%	79.6%	3.7%	11.1%	3.7%	1.9%	10	50.0%	0.0%	20.0%	10.0%	20.0%	0.0%	13	69.2%	0.0%	7.7%	7.7%	15.4%	0.0%
Chhattisgarh	229	65.5%	78.6%	4.4%	3.1%	13.5%	0.4%	52	42.3%	25.0%	5.8%	9.6%	17.3%	0.0%	144	46.5%	13.9%	15.3%	0.7%	18.8%	4.9%
D & N Haveli	7	42.9%	42.9%	28.6%	0.0%	14.3%	14.3%	2	0.0%	0.0%	0.0%	100.0%	0.0%	0.0%	3	33.3%	0.0%	0.0%	0.0%	66.7%	0.0%
Daman & Diu	7	71.4%	71.4%	0.0%	0.0%	28.6%	0.0%	0							0						
Delhi	927	74.3%	74.9%	7.1%	7.8%	8.2%	2.0%	195	50.3%	0.5%	7.2%	27.2%	12.3%	2.6%	428	68.2%	0.2%	8.2%	6.8%	12.4%	4.2%
Goa	36	91.7%	91.7%	0.0%	2.8%	2.8%	2.8%	5	100.0%	0.0%	0.0%	0.0%	0.0%	0.0%	16	56.3%	0.0%	0.0%	18.8%	25.0%	0.0%
Gujarat	2218	67.5%	68.4%	8.5%	9.2%	12.8%	1.0%	257	46.3%	1.2%	10.9%	25.7%	13.2%	2.7%	1423	61.3%	1.8%	9.3%	7.4%	18.0%	2.2%
Haryana	996	70.3%	74.4%	5.5%	5.5%	13.8%	0.8%	226	55.3%	4.4%	7.5%	14.2%	17.7%	0.9%	614	57.7%	7.2%	8.6%	4.2%	21.8%	0.5%
Himachal Pradesh	365	76.7%	84.1%	5.8%	4.9%	4.4%	0.8%	73	58.9%	2.7%	5.5%	20.5%	12.3%	0.0%	59	54.2%	11.9%	11.9%	3.4%	18.6%	0.0%
Jammu & Kashmir	271	82.7%	86.3%	3.3%	3.7%	5.5%	1.1%	26	50.0%	11.5%	3.8%	26.9%	3.8%	3.8%	74	70.3%	4.1%	4.1%	5.4%	10.8%	5.4%
Jharkhand	346	69.1%	80.6%	6.9%	2.0%	9.5%	0.9%	48	52.1%	18.8%	10.4%	6.3%	10.4%	2.1%	340	70.0%	9.1%	5.6%	1.8%	11.2%	2.4%
Karnataka	1032	62.4%	67.0%	9.0%	7.1%	14.5%	2.4%	294	46.3%	3.1%	12.9%	15.6%	20.4%	1.7%	966	43.6%	5.2%	12.0%	6.0%	27.6%	5.6%
Kerala	308	67.5%	71.1%	6.8%	10.4%	9.4%	2.3%	186	68.3%	4.3%	3.2%	11.8%	10.2%	2.2%	150	46.0%	4.0%	8.0%	7.3%	32.7%	2.0%
Lakshadweep	0							0							0						
Madhya Pradesh	1260	63.9%	76.9%	5.8%	3.6%	11.8%	1.9%	256	49.2%	13.3%	6.3%	12.5%	18.0%	0.8%	986	51.7%	15.6%	8.1%	4.0%	16.7%	3.9%
Maharashtra	2357	63.8%	69.4%	8.8%	4.9%	15.1%	1.7%	410	45.9%	3.9%	9.8%	19.8%	18.3%	2.0%	1089	55.0%	3.9%	11.1%	4.0%	22.5%	3.3%
Manipur	21	81.0%	81.0%	0.0%	9.5%	9.5%	0.0%	11	36.4%	0.0%	9.1%	36.4%	18.2%	0.0%	44	59.1%	6.8%	9.1%	4.5%	15.9%	4.5%
Meghalaya	66	47.0%	57.6%	3.0%	16.7%	16.7%	6.1%	47	27.7%	6.4%	8.5%	29.8%	25.5%	2.1%	39	35.9%	15.4%	12.8%	12.8%	23.1%	0.0%
Mizoram	35	85.7%	88.6%	2.9%	5.7%	2.9%	0.0%	5	60.0%	0.0%	0.0%	40.0%	0.0%	0.0%	5	60.0%	0.0%	20.0%	20.0%	0.0%	0.0%
Nagaland	49	87.8%	89.8%	2.0%	6.1%	2.0%	0.0%	20	75.0%	0.0%	5.0%	5.0%	10.0%	5.0%	25	80.0%	8.0%	4.0%	0.0%	8.0%	0.0%
Orissa	515	58.1%	73.4%	8.3%	2.5%	15.3%	0.4%	104	50.0%	14.4%	11.5%	13.5%	9.6%	1.0%	380	47.9%	14.2%	8.4%	2.9%	21.1%	5.5%
Puducherry	24	70.8%	70.8%	0.0%	16.7%	12.5%	0.0%	5	80.0%	0.0%	0.0%	0.0%	20.0%	0.0%	13	61.5%	7.7%	0.0%	0.0%	30.8%	0.0%
Punjab	924	68.4%	77.3%	6.6%	4.2%	10.0%	1.9%	140	57.1%	7.9%	12.9%	12.9%	8.6%	0.7%	293	57.0%	11.6%	9.2%	3.4%	13.3%	5.5%
Rajasthan	2338	73.1%	79.7%	6.1%	4.1%	10.0%	0.2%	366	55.7%	9.0%	7.9%	12.6%	14.2%	0.5%	1765	67.5%	7.4%	6.7%	3.7%	14.3%	0.3%
Sikkim	23	69.6%	69.6%	4.3%	21.7%	4.3%	0.0%	18	33.3%	0.0%	16.7%	44.4%	5.6%	0.0%	10	80.0%	0.0%	20.0%	0.0%	0.0%	0.0%
Tamil Nadu	1273	66.8%	73.1%	8.5%	3.6%	14.2%	0.5%	192	44.3%	5.7%	13.5%	20.3%	15.1%	1.0%	777	50.7%	6.9%	10.9%	2.2%	28.2%	1.0%
Tripura	42	73.8%	73.8%	4.8%	9.5%	11.9%	0.0%	14	85.7%	0.0%	7.1%	7.1%	0.0%	0.0%	8	62.5%	12.5%	0.0%	12.5%	12.5%	0.0%
Uttar Pradesh	4407	73.7%	81.2%	5.6%	2.0%	10.3%	0.8%	554	56.7%	11.2%	7.6%	10.8%	13.0%	0.7%	3331	65.6%	9.7%	6.1%	2.0%	13.4%	3.2%
Uttarakhand	335	60.9%	68.7%	7.8%	4.8%	14.3%	4.5%	57	42.1%	8.8%	14.0%	7.0%	26.3%	1.8%	190	61.1%	5.3%	7.9%	6.3%	14.2%	5.3%
West Bengal	1664	67.8%	72.1%	7.0%	6.3%	13.2%	1.3%	448	50.7%	2.5%	9.4%	21.2%	14.5%	1.6%	846	51.8%	5.0%	8.0%	4.5%	28.8%	1.9%
Grand Total	25443	68.9%	75.4%	7.0%	4.9%	11.6%	1.2%	4786	51.0%	7.1%	9.2%	16.5%	14.8%	1.3%	16835	59.7%	7.9%	8.1%	4.0%	17.7%	2.5%

Programme infrastructure, Staffing and Training status in 4th quarter 2010

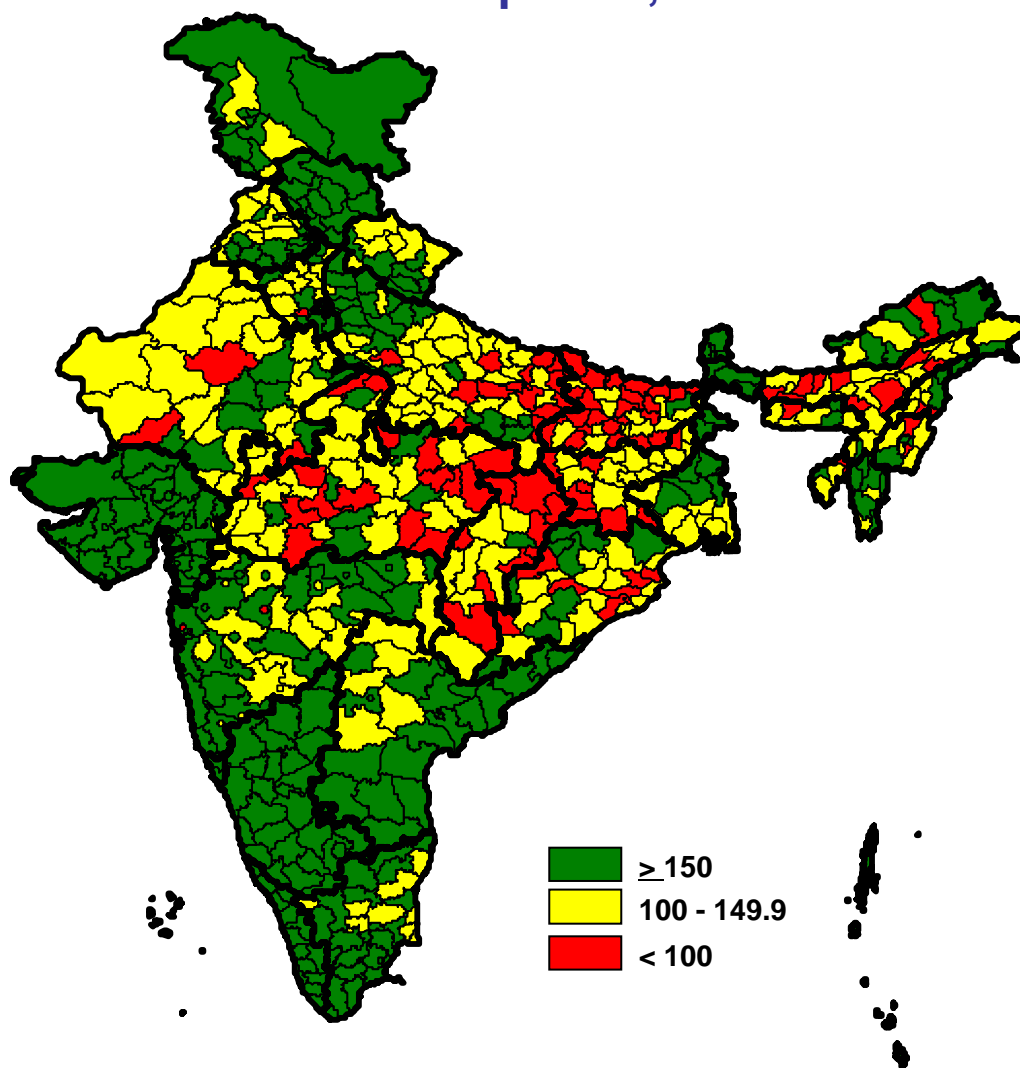
Implementing states	Total no. of reporting units (Districts / DTC)	Implementing district details		Involvement of Other sectors			Number of key staff in position						In Place and trained in RNTCP	
		No. of TB Units	No. of DMCs	NGO	PP	Medical College	DTO	2nd MO	MO-TC	STS	STLS	LT	MO	Para Staff
Andaman & Nicobar	1	3	13	0	0	0	1	0	3	3	3	19	78%	83%
Andhra Pradesh	24	178	921	114	123	33	16	20	163	169	173	846	71%	87%
Arunachal Pradesh	13	13	32	18	0	0	13	1	6	13	13	42	70%	58%
Assam	23	68	340	40	18	3	23	4	53	65	66	422	78%	63%
Bihar	38	173	705	8	3	7	29	31	212	148	147	633	76%	82%
Chandigarh	1	3	17	6	117	2	1	1	3	3	5	17	100%	100%
Chhattisgarh	16	60	301	13	0	3	15	1	55	52	54	286	81%	88%
D & N Haveli	1	1	5	0	5	0	1	0	1	1	1	5	100%	100%
Daman & Diu	2	2	4	0	3	0	2	1	2	2	2	4	96%	100%
Delhi	24	35	204	84	82	6	24	15	22	44	40	192	95%	77%
Goa	2	4	20	5	16	1	2	0	4	4	4	20	100%	100%
Gujarat	30	138	729	153	3826	15	20	17	137	136	135	698	96%	91%
Haryana	21	45	619	9	157	4	18	9	46	45	39	217	79%	72%
Himachal Pradesh	12	41	168	4	42	2	12	3	35	40	40	210	79%	79%
Jammu & Kashmir	14	42	173	6	13	5	14	10	33	43	42	229	90%	81%
Jharkhand	24	70	294	35	15	3	23	14	55	69	70	395	82%	84%
Karnataka	31	125	647	52	319	39	28	7	124	119	122	625	81%	80%
Kerala	14	73	480	76	14	18	13	8	58	73	72	559	77%	67%
Lakshadweep	1	1	9	2	0	0	1	0	0	1	1	17	56%	100%
Madhya Pradesh	50	144	739	51	89	11	49	9	119	134	138	722	88%	84%
Maharashtra	55	263	1300	368	4144	41	52	52	247	249	250	1265	75%	84%
Manipur	9	13	52	100	12	2	9	5	3	13	17	53	75%	52%
Meghalaya	7	12	55	20	0	1	7	2	10	12	12	59	83%	69%
Mizoram	8	9	30	1	0	0	8	1	4	9	9	29	75%	92%
Nagaland	11	15	44	41	16	0	11	0	3	13	13	47	80%	64%
Orissa	31	108	546	35	2	6	31	10	102	107	94	515	87%	87%
Puducherry	1	4	22	4	4	8	1	1	4	5	5	22	71%	94%
Punjab	20	57	290	70	362	8	20	6	51	56	56	286	88%	71%
Rajasthan	32	150	824	57	247	8	33	8	129	148	147	797	86%	81%
Sikkim	4	5	20	4	1	1	4	0	4	5	5	20	84%	86%
Tamil Nadu	31	142	789	92	122	21	25	24	108	130	133	716	83%	94%
Tripura	4	10	53	3	0	2	4	2	8	9	10	60	95%	96%
Uttar Pradesh	71	391	1834	288	222	22	60	52	362	372	350	1941	75%	61%
Uttarakhand	13	30	144	15	78	4	13	5	22	28	28	151	63%	59%
West Bengal	19	189	841	140	11	11	18	11	178	186	188	962	82%	75%
Grand Total	658	2617	13264	1914	10063	287	601	330	2366	2506	2484	13081	81%	80%

TB suspects examined per 100,000 population*, 2001-2010



* During RNTCP expansion phase, data for districts implementing partial quarters has been excluded

TB Suspects examined per 100,000 population by district, India, Fourth quarter, 2010



Cure rate by district, India

Fourth quarter, 2009

